



COMUNE DI UGENTO
 Provincia di Lecce
 Settore Urbanistica - Ambiente & SUAP

PROGETTISTI
 ARCH. GIANFRANCO PREITE - ARCH. ANTONIO D'AQUINO

Piano del Colore - Ugento

SINDACO
 Avv. Massimo LECCI
 ASSESSORE
 Dott.ssa Anna Daniela SPECOLIZZI
 R. U. P.
 Arch. Nicola PACELLA COLUCCIA

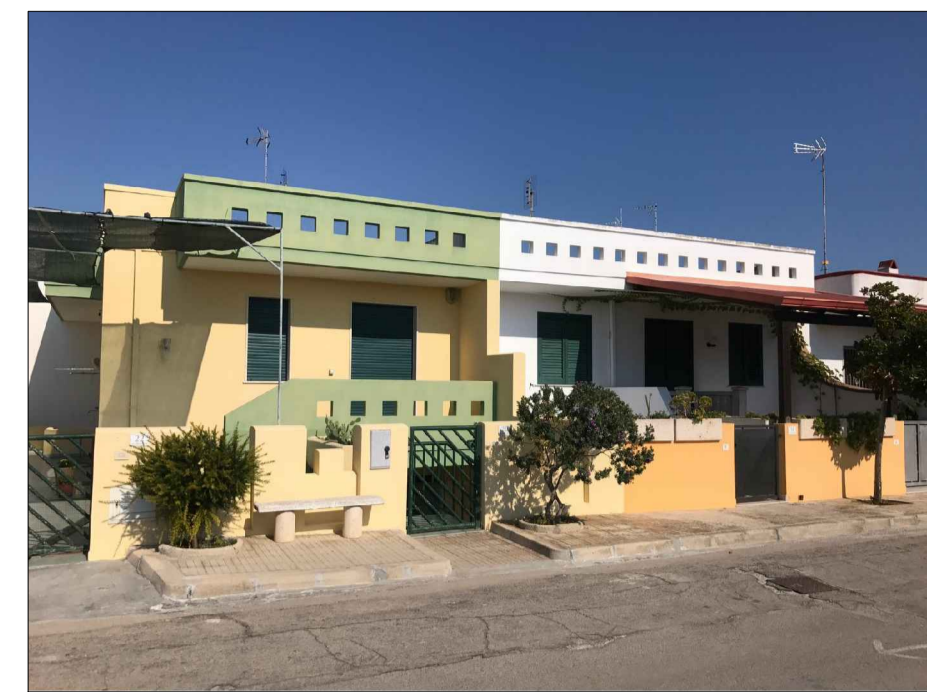
OTTOBRE 2017

Torre S. Giovanni - Torre Mozza - Lido Marini
 TAV. V
 Documentazione fotografica
 edifici campione

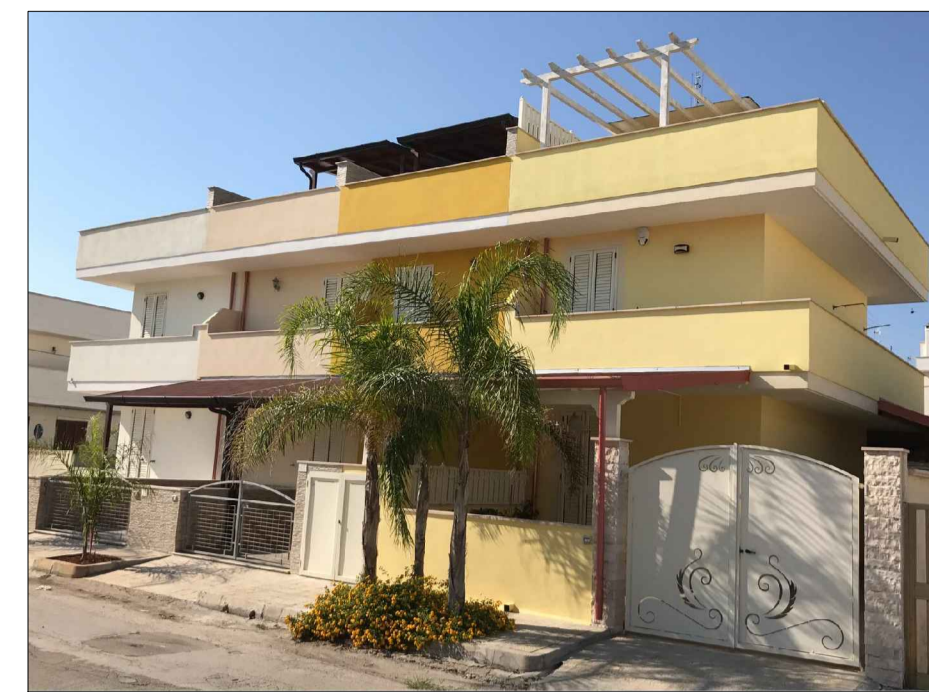
TORRE SAN GIOVANNI



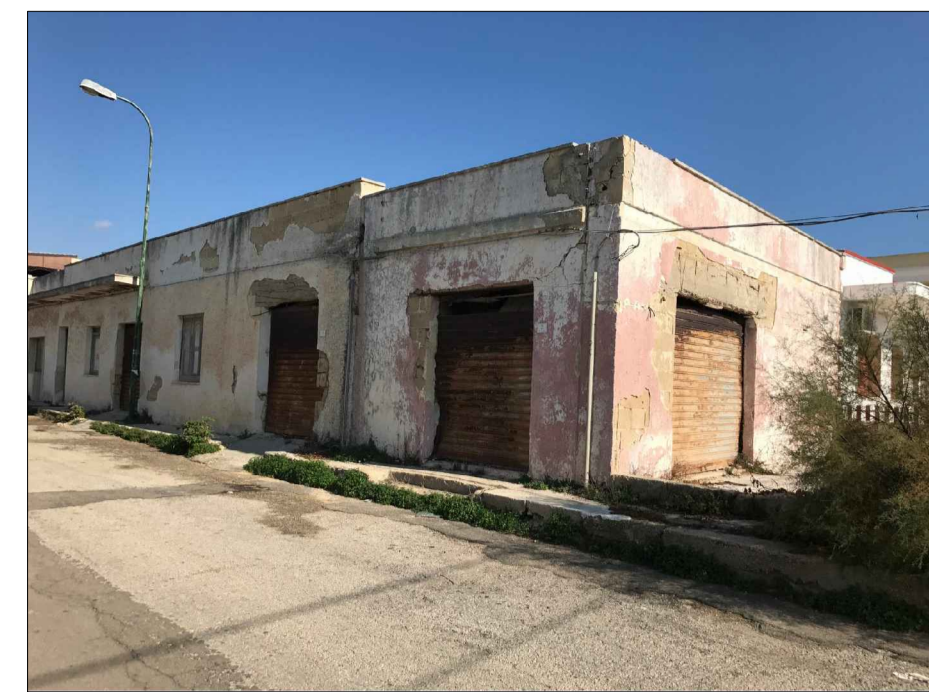
S 0550 - G80Y
 S 0300 - N
 S 0580 - Y80R



S 0530 - G80Y
 S 2030 - G40Y
 S 0300 - N



S 0530 - G80Y
 S 0560 - Y20R
 S 0907 - Y70R



S 0300 - N
 S 1030 - Y80R



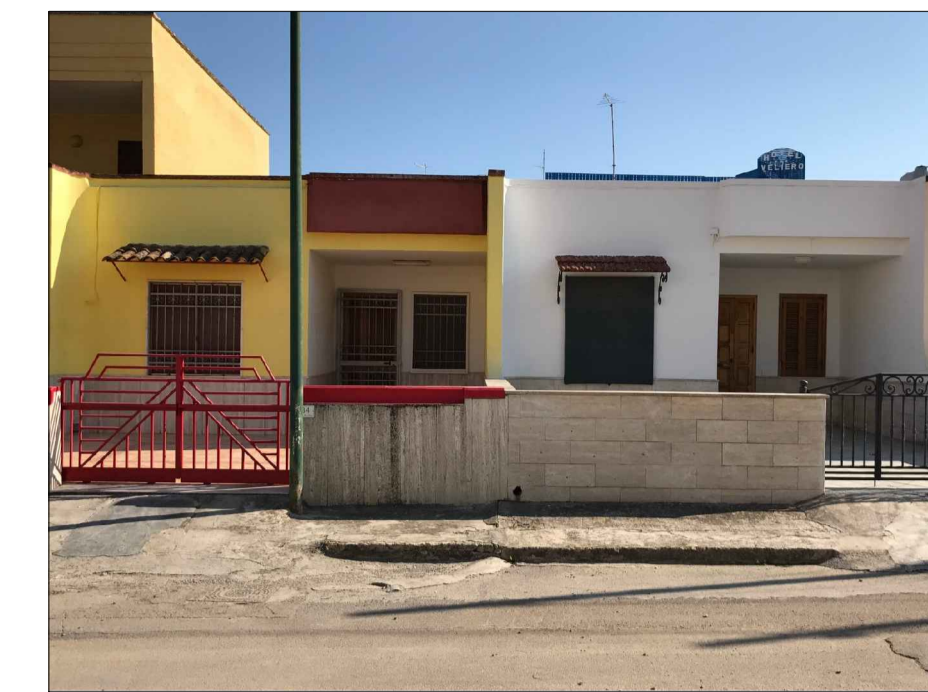
S 2040 - R80B
 S 0300 - N



S 1030 - B90G
 S 0300 - N
 S 1515 - R90B



S 0560 - Y80R
 S 0300 - N
 S 0540 - G80Y



S 0300 - N
 S 0540 - G80Y
 S 0585 - Y80R

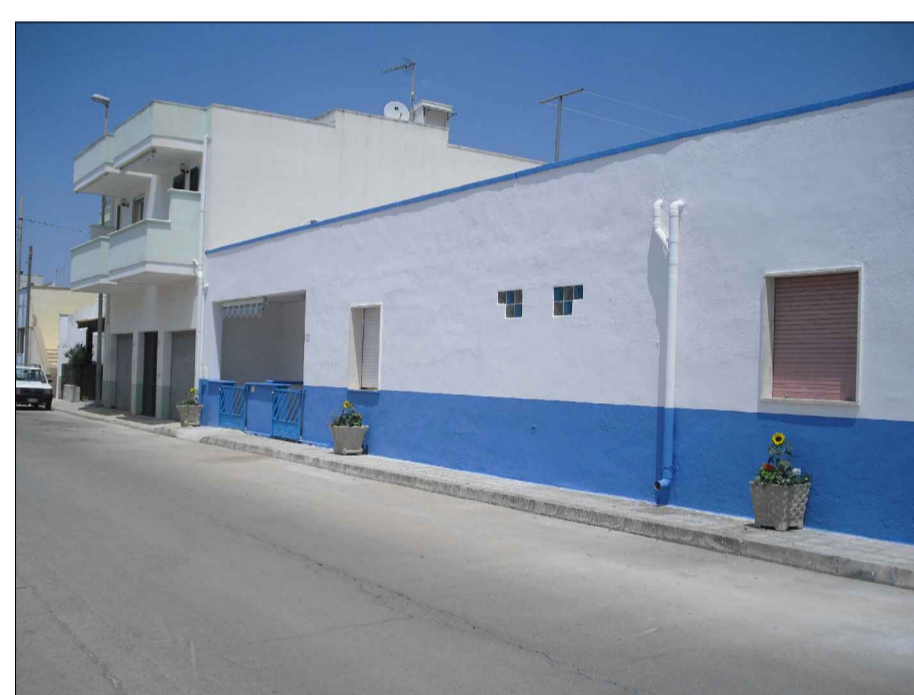


S 3060 - G
 S 0300 - N
 S 0515 - Y30R

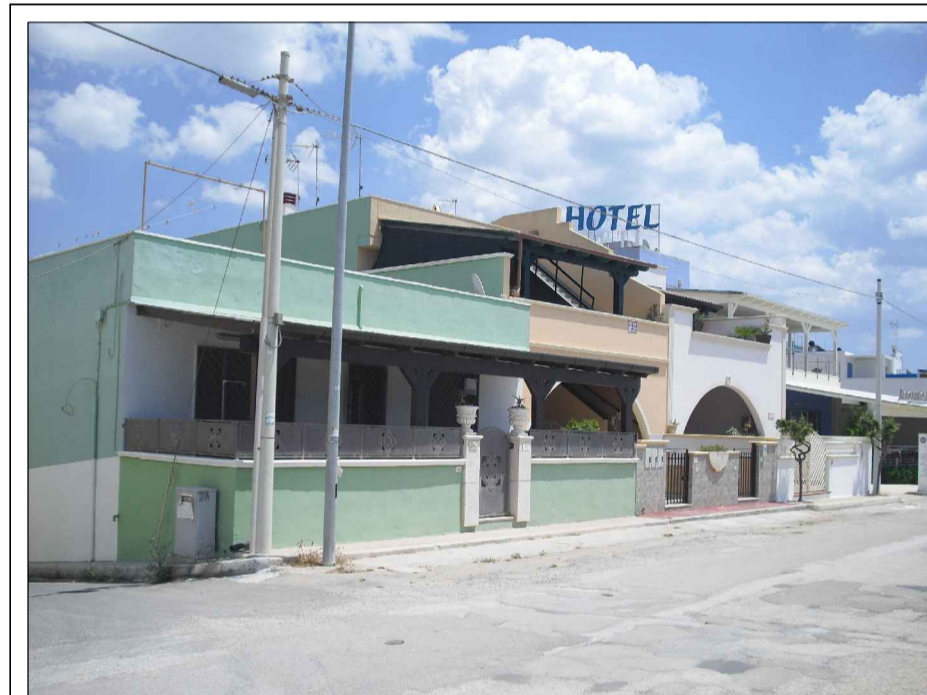


S 0570 - Y70R
 S 0580 - Y10R
 S 0300 - N

TORRE MOZZA



S 1550 - R80B
 S 0300 - N



S 2040 - G30Y
 S 5030 - Y20R
 S 0300 - N



S 0507 - Y
 S 0540 - Y80R
 S 0580 - Y30R



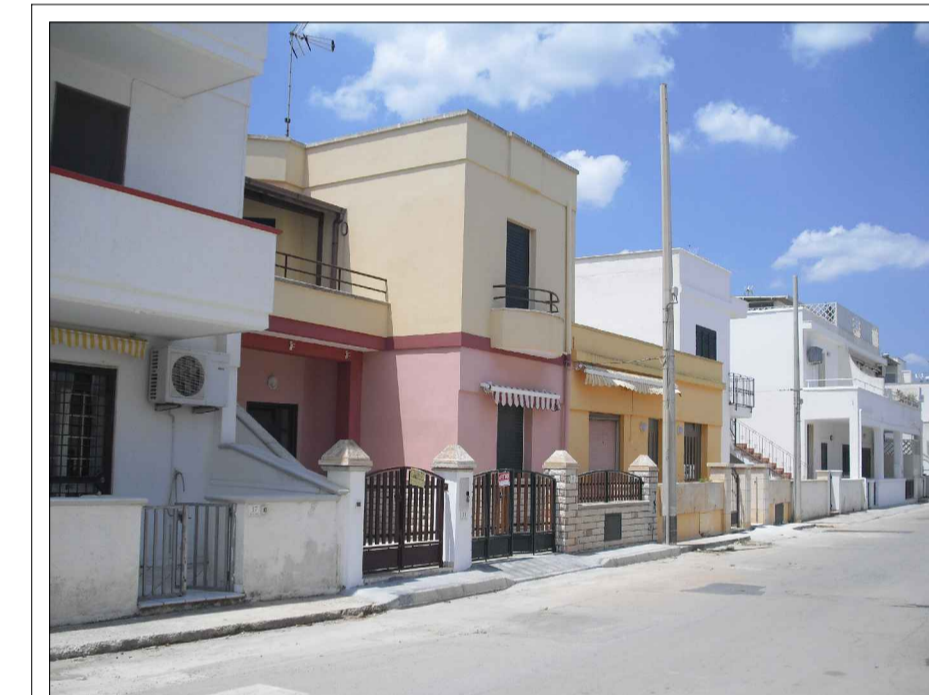
S 0520 - G90Y
 S 2070 - Y90R
 S 0300 - N



S 1060 - Y10R
 S 0300 - N



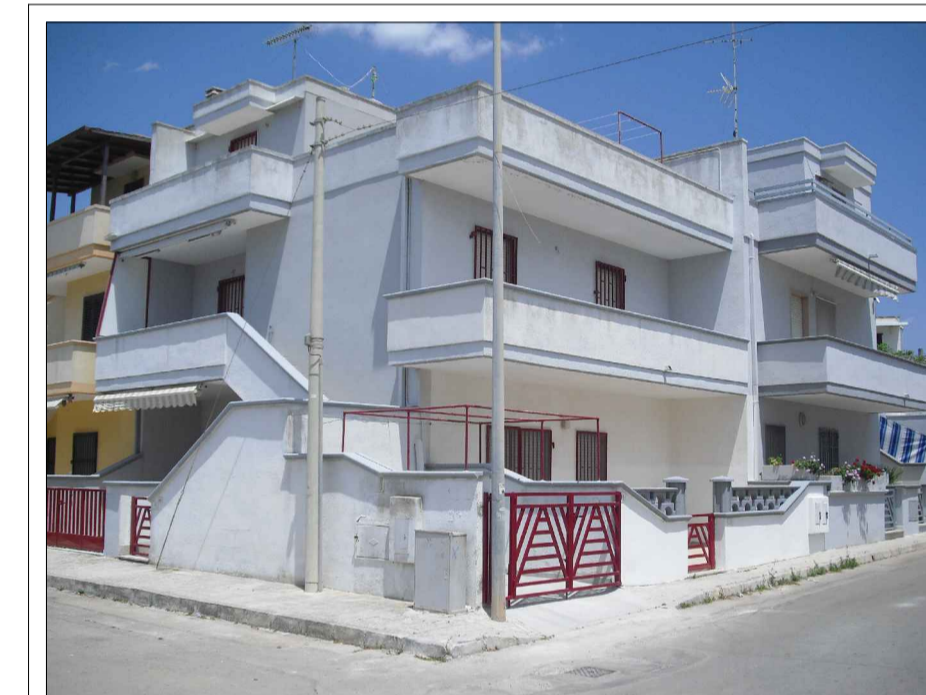
S 0507 - Y
 S 2040 - G
 S 0560 - G80Y



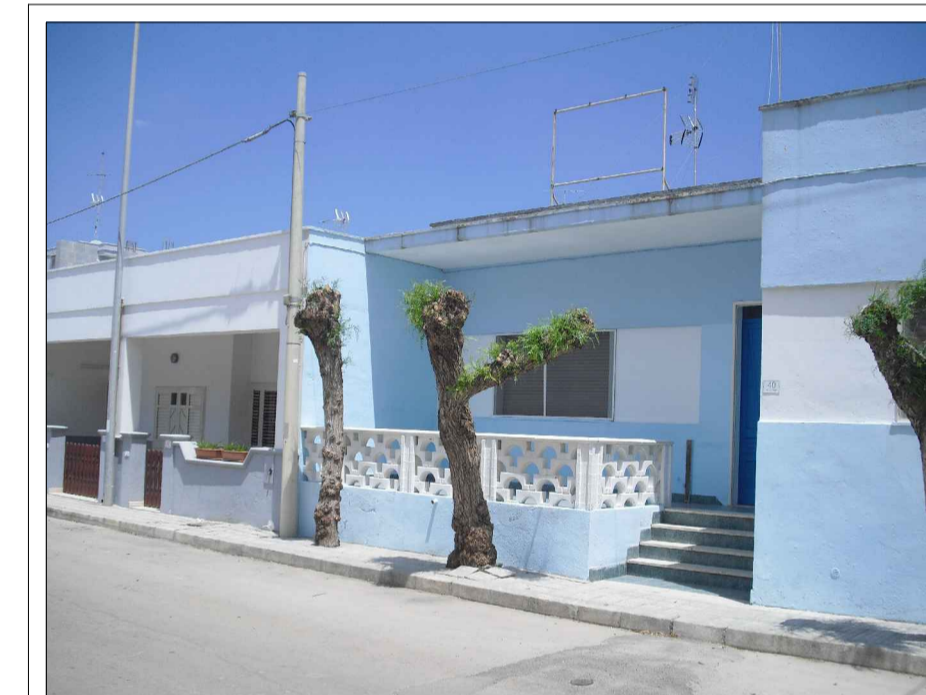
S 0507 - Y
 S 0515 - R
 S 0560 - R



S 0300 - N
 S 0550 - Y90R



S 1005 - R90B
 S 0300 - N



S 1050 - B
 S 0300 - N
 S 1502 - G50Y

LIDO MARINI



S 0530 - Y10R
 S 0300 - N



S 1070 - R
 S 0530 - Y
 S 0507 - Y



S 5030 - G50Y
 S 3030 - Y70R
 S 0300 - N



S 4050 - Y40R
 S 3030 - Y30R



S 1060 - B
 S 1050 - B
 S 0300 - N



S 0570 - G90Y



S 1515 - Y80R
 S 0300 - N



S 0300 - N



S 0300 - N
 S 1050 - B
 S 1060 - Y30R



S 5060 - Y10R
 S 1060 - B
 S 0300 - N