



COMUNE DI UGENTO
 Provincia di Lecce
 Settore Urbanistica - Ambiente & SUAP

PROGETTISTI
 ARCH. GIANFRANCO PREITE - ARCH. ANTONIO D'AQUINO

SINDACO
 Avv. Massimo LECCI
 ASSESSORE
 Dott.ssa Anna Daniela SPECOLIZZI
 R. U. P.
 Arch. Nicola PACELLA COLUCCIA

OTTOBRE 2017

Ugento - Gemini
 TAV. IV
 Documentazione fotografica
 edifici campione

UGENTO



S 0530 - Y10R
 S 0300 - N
 S 1050 - Y20R



S 0300 - N
 S 2040 - Y10R



S 0300 - N
 S 3030 - G80Y
 S 4030 - G90Y



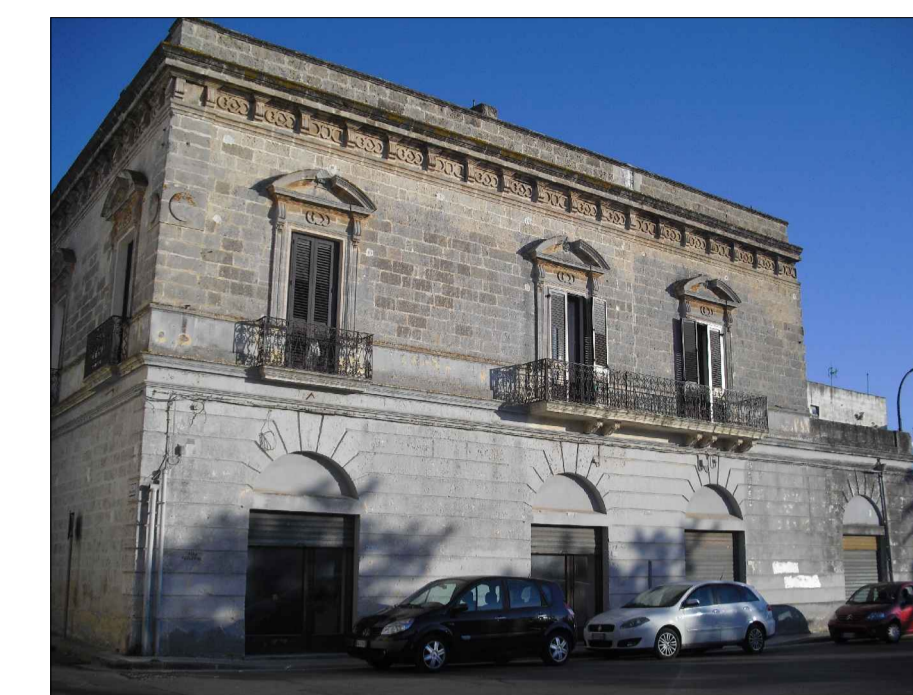
S 0300 - N
 S 3030 - G80Y
 S 4030 - G90Y



S 0300 - N
 S 2000 - N
 S 5000 - N



S 0300 - N
 S 0520 - Y
 S 1020 - Y60R



S 0520 - Y
 S 2000 - N



S 5030 - Y50R
 S 5040 - G90Y
 S 0300 - N



S 5030 - Y50R



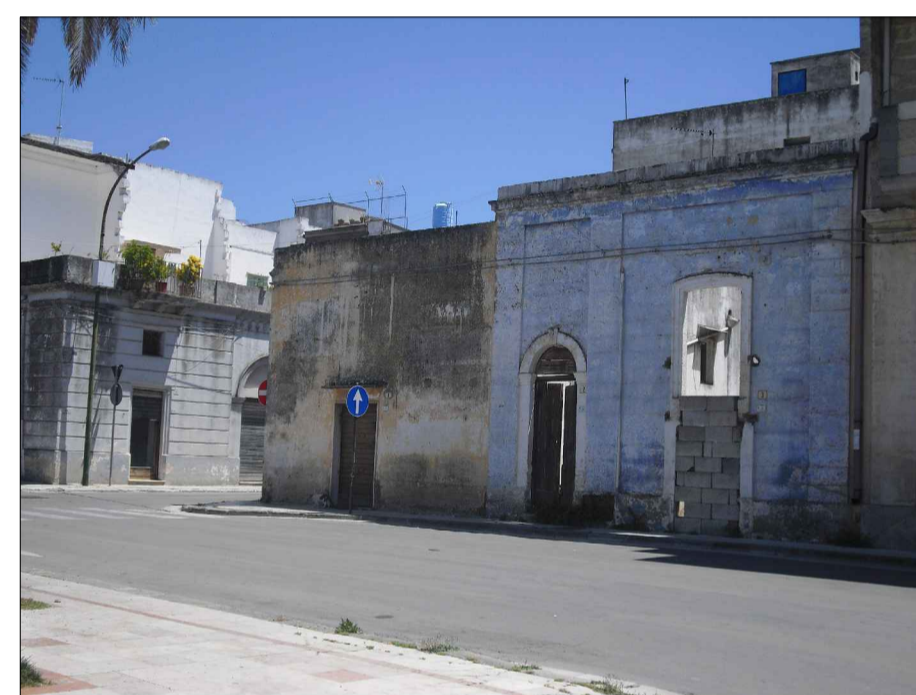
S 0300 - N
 S 2060 - R90B



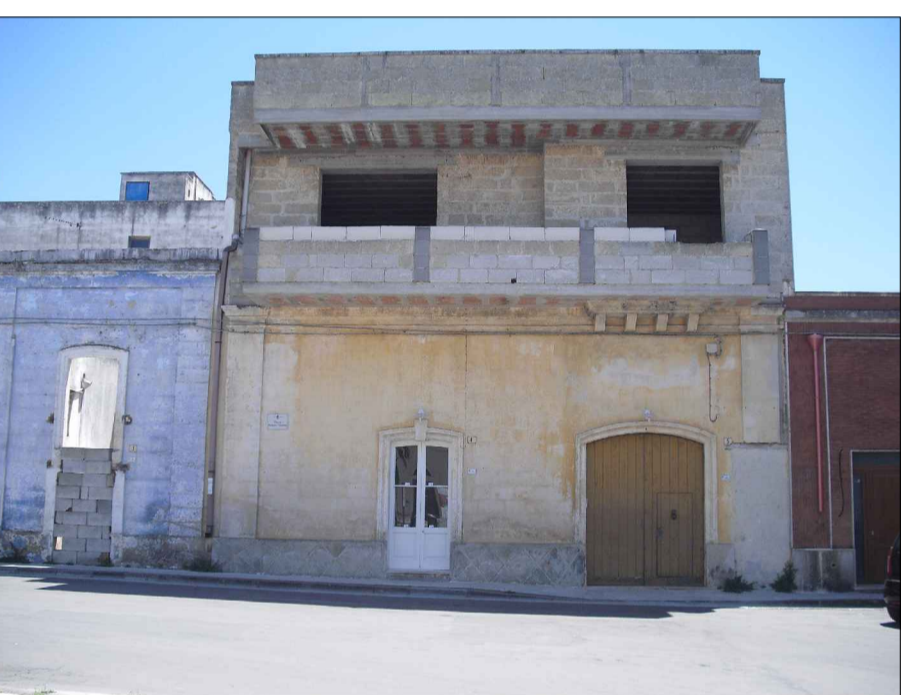
S 5060 - Y30R
 S 0520 - Y
 S 0300 - N



S 2020 - Y
 S 5040 - Y80R
 S 1510 - Y70R



S 1030 - R80B
 S 0300 - N
 S 5050 - Y30R



S 5030 - Y10R
 S 1030 - R80B
 S 5030 - Y80R



S 5040 - G90Y
 S 1040 - R80B
 S 0300 - N



S 5050 - Y
 S 0300 - N



S 0300 - N
 S 5030 - R80B
 S 2050 - R30B
 S 5050 - Y



S 0300 - N
 S 5050 - G90Y



S 0300 - N
 S 0530 - G80Y
 S 5050 - Y



S 2040 - R80B
 S 2010 - R80B

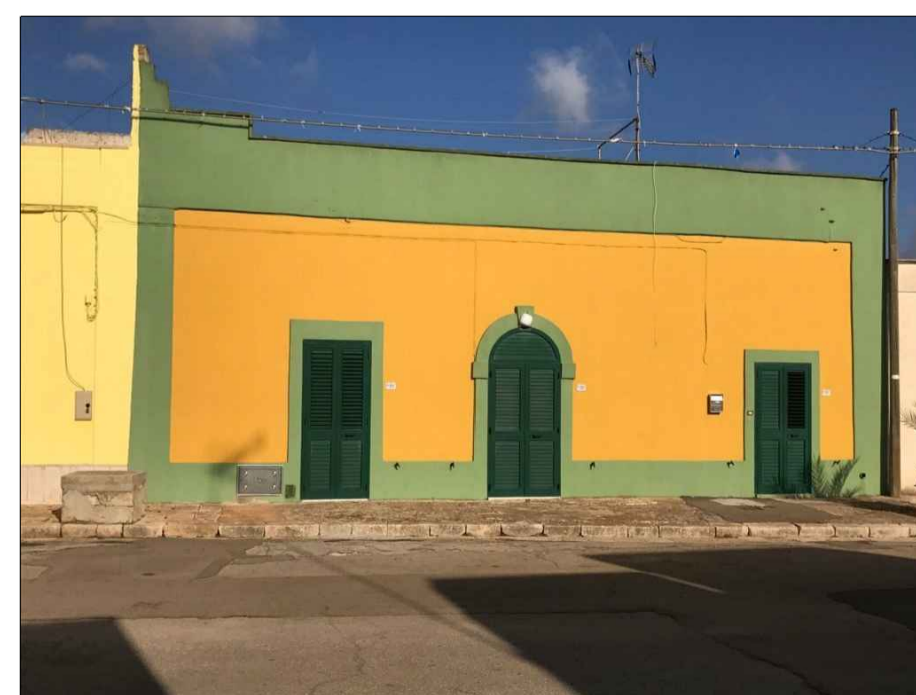


S 4030 - G30Y
 S 5030 - G30Y
 S 0520 - Y



S 0530 - Y
 S 5050 - G90Y
 S 5050 - G90Y
 S 1020 - Y60R

GEMINI



S 0580 - Y10R
 S 1050 - G



S 0500 - N
 S 2065 - B



S 1030 - Y30R
 S 2050 - B90G



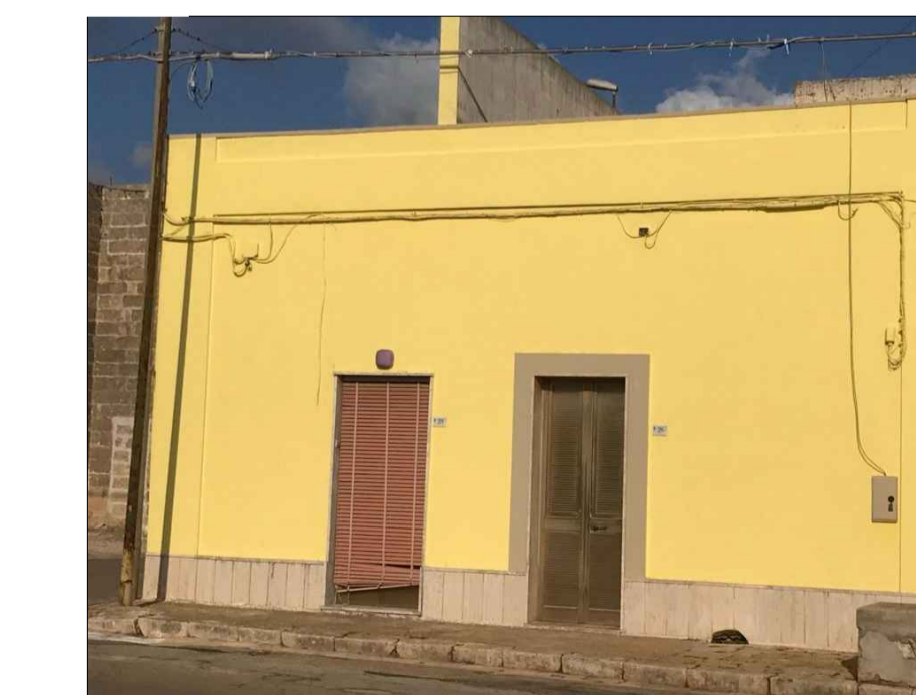
S 0520 - Y
 S 1030 - Y30R
 S 0540 - R20B



S 3560 - Y80R
 S 3020 - G30Y
 S 0505 - G80Y



S 1060 - R
 S 1002 - B



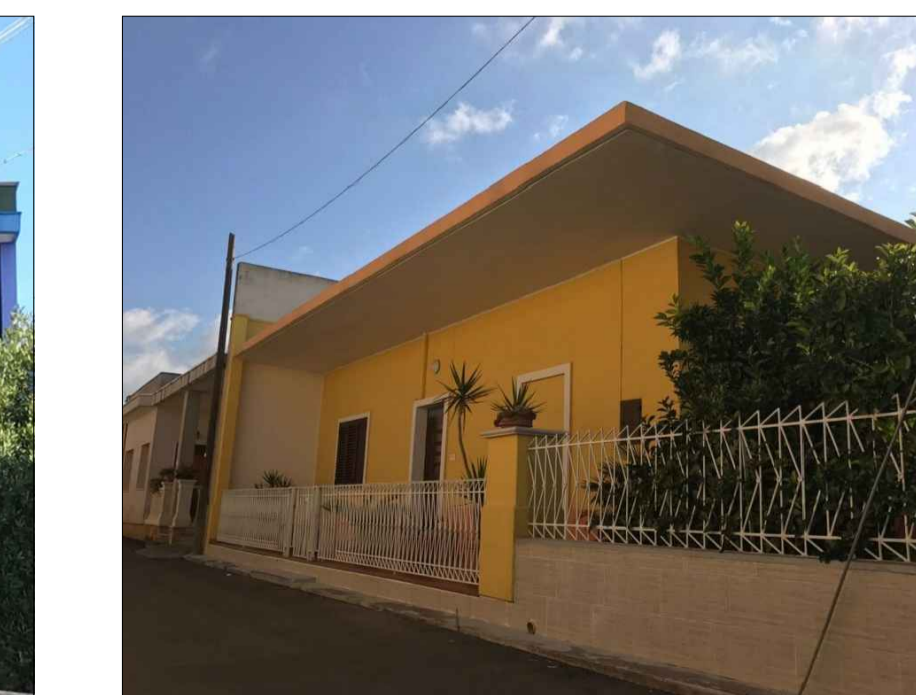
S 0515 - Y
 S 2005 - Y80R



S 4030 - Y20R
 S 1040 - B30G
 S 5030 - Y80R



S 1560 - R90B
 S 3050 - G



S 0550 - Y
 S 0300 - N